

## Water Conservation Season Is Here!

With an average residential water use of 52 gallons per person per day, Portland is among the most water-efficient cities in the nation.

Over the past ten years, Portland's population has grown by 18%—but the city's total water use has decreased by 13%. This water savings is partly a result of how Portlanders have embraced water-saving technology and changed behaviors to make the most of each drop.

Portlanders are using less water, but water use is at its highest in the summer when we irrigate our lawns and gardens. By being water wise in your garden, you can help stretch our water supply and create a healthy landscape. Stay wise, Portland. Stay water wise.

### Nurture Your Soil

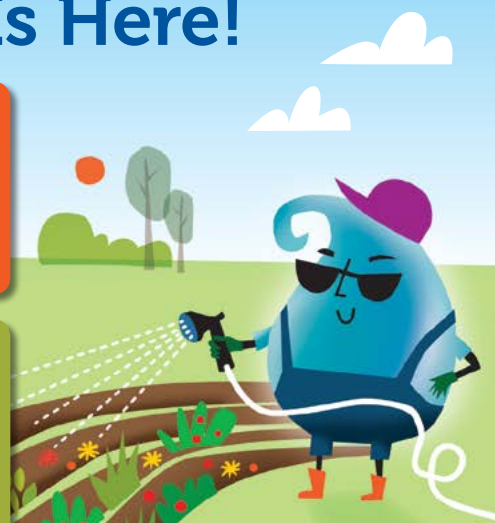
Healthy soil is the root (pun intended) of a healthy and water-efficient garden. Add 2-3 inches of compost to the top of garden beds to help hold moisture in the soil.

### Plant Smarter Plants

Native plants and plants adapted to Portland's climate are the best choices for a beautiful, water-efficient garden. Visit [www.portlandoregon.gov/water/conservation](http://www.portlandoregon.gov/water/conservation) for tip sheets and brochures about water-efficient landscapes, including the popular guide, *Water-Efficient Plants for the Willamette Valley*.

### Water Smarter

Always water in the early morning to limit evaporation. If you have an automatic irrigation system, you may qualify for a rebate to upgrade your system. Visit [www.portlandoregon.gov/water/rebate](http://www.portlandoregon.gov/water/rebate) to learn more.



Keep Portland water wise this summer.



## Summer Drinking Water Supply

With the mild winter this year and California facing statewide water restrictions, many Portlanders are wondering about local water supply.

Portland's primary drinking water supply is the Bull Run Watershed, a source that relies much more on rain than on snow. The low snowpack we experienced this winter doesn't by itself create water supply challenges for Portland.

The amount of precipitation in April,

May, and June has a much greater influence on the summer water supply in the Bull Run.

As a steward of the city's drinking water, the **Portland Water Bureau (PWB) carefully monitors** water levels, weather forecasts, and water-use patterns to ensure there is plenty of clean water for all customers. Every year, PWB plans for summer supply to determine the best use of Portland's water resources. For information about summer supply, visit [www.portlandoregon.gov/water/summersupplyplan](http://www.portlandoregon.gov/water/summersupplyplan).



Bull Run Lake in the Bull Run Watershed

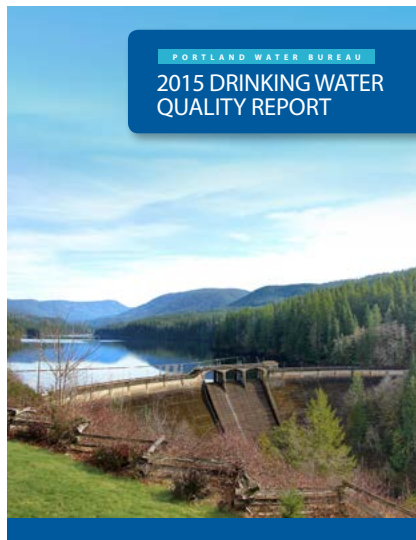
## Did you know?

- The Bull Run Watershed receives four times more rain than Portland.
- Portland's reservoirs in the Bull Run Watershed store 9.9 billion gallons of usable water. This is usually enough water for the needs of the city throughout the summer.
- Thanks to good planning and investment, Portland has a second, high-quality drinking water source—the Columbia South Shore Well Field. The well field can supplement the Bull Run supply, or be an alternate source if needed.

## Annual Drinking Water Quality Report Now Available

Drinking water throughout the United States must meet rigorous quality and health standards. The Portland Water Bureau carefully monitors drinking water throughout the system, testing thousands of water samples every year for hundreds of possible contaminants.

The results are published in the annual Drinking Water Quality Report. Read the report online at [www.portlandoregon.gov/water/waterqualityreport](http://www.portlandoregon.gov/water/waterqualityreport) or request a paper copy by calling **503-823-7525**. The report is available in English, Spanish, Russian, Vietnamese, and Chinese.



## Monthly Payments

You can now sign up to receive monthly sewer, stormwater and drinking water billing statements. Enroll online at [www.portlandoregon.gov/utilitybill](http://www.portlandoregon.gov/utilitybill), call the Customer Call Center at 503-823-7770, or visit in person at 1120 SW Fifth Ave., Portland, OR 97204.

## Keep Your Meter Clear

City code requires that your water meter must be accessible for meter readers. Please take time this summer to find your water meter box and make sure it is clear so meter readers can take an accurate reading. The Portland Water Bureau may charge a \$85 fine if a meter reader is not able to access your meter. For more information, call **503-823-1542**.

## Dodge Park

For nearly 100 years the Portland Water Bureau has owned Dodge Park, a pocket of land at the confluence of the Sandy and Bull Run Rivers. This scenic spot is important for key pieces of water system infrastructure, and is a historical recreational retreat for Portlanders.

Dodge Park is 20 miles east of Portland, and offers seasonal camping and all-year picnicking, fishing, and boating.

For more information and to plan your visit, go to

[www.portlandoregon.gov/water/dodgepark](http://www.portlandoregon.gov/water/dodgepark).



*The beach at Dodge Park circa 1926*



See City of Portland Municipal Code 21.12.290.



**Portland Water Bureau**  
1120 SW Fifth Avenue, Room 600  
Portland, OR 97204

Nick Fish, Commissioner  
David G. Shaff, Administrator

Customer Service: 503-823-7770  
Portland Water Bureau Water Line: 503-823-7525  
TTY: 503-823-6868  
[www.portlandoregon.gov/water](http://www.portlandoregon.gov/water)

To help ensure equal access to City programs, services, and activities, the City of Portland will provide translation, reasonably modify policies/procedures and provide auxiliary aids/services/alternative formats to persons with disabilities. For accommodations, translations and interpretations, complaints, and additional information, contact 503-823-7525, use City TTY 503-823-6868, or use Oregon Relay Service: 711