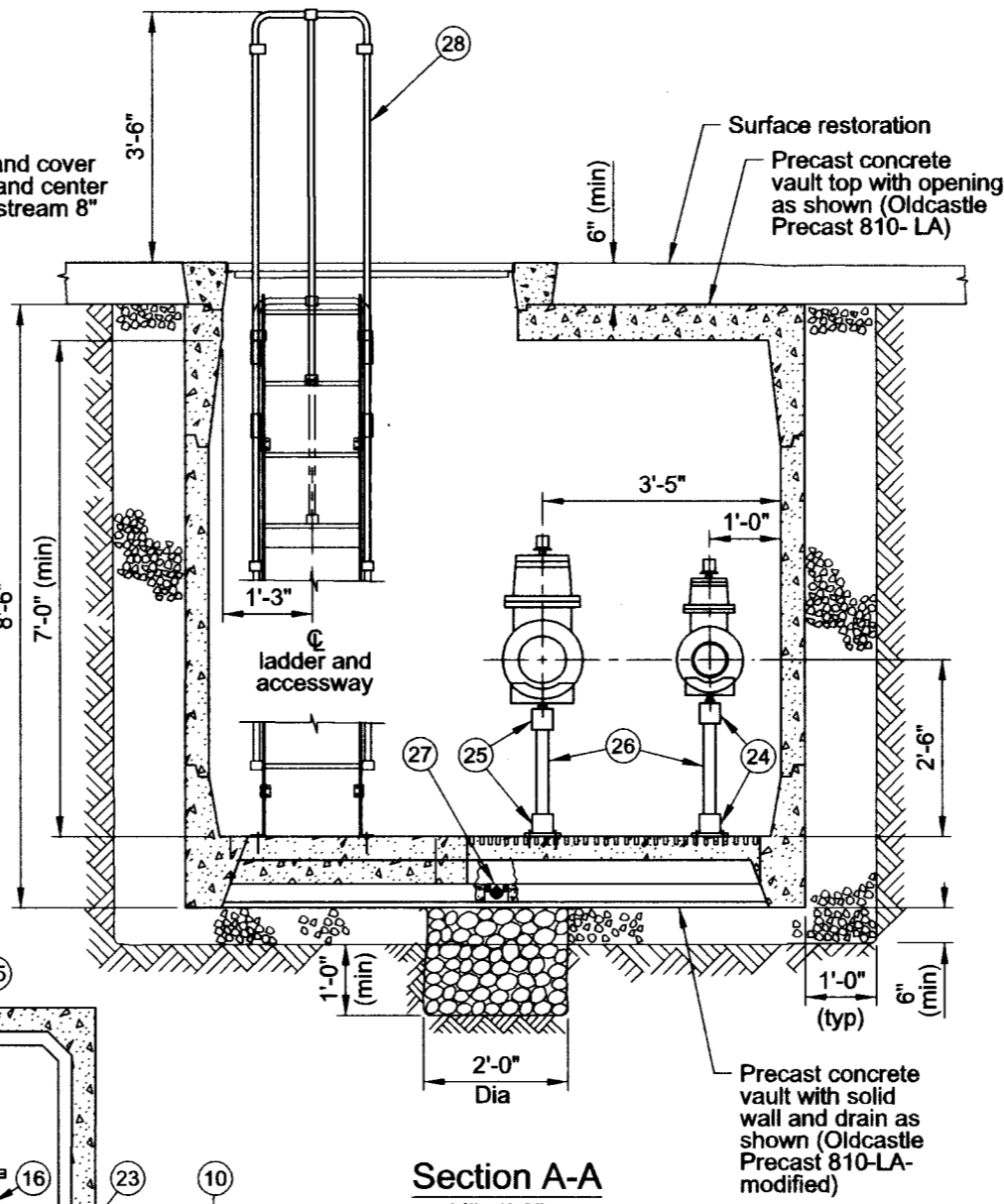
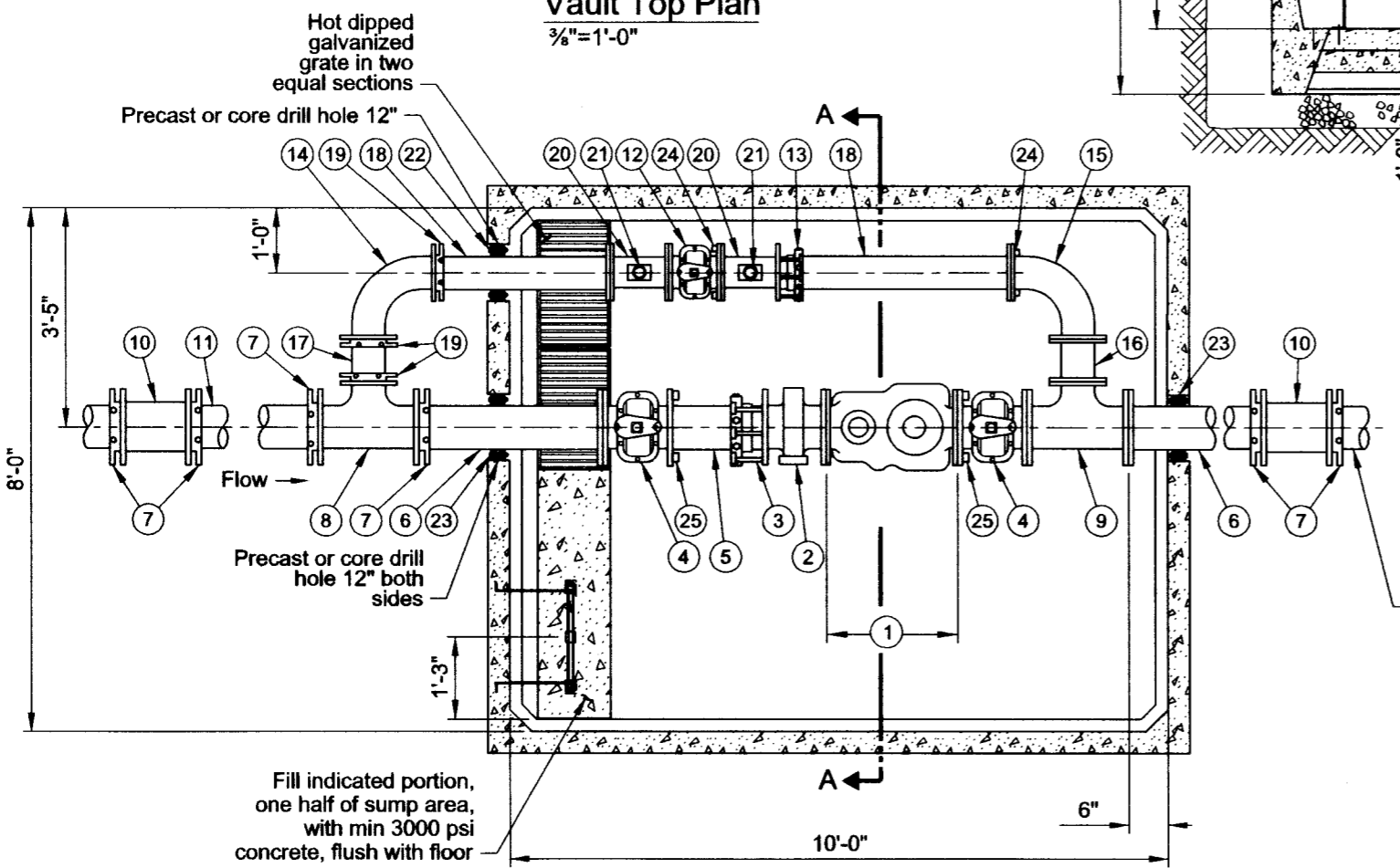


Vault Top Plan
3/8"=1'-0"



Section A-A
3/8"=1'-0"



Vault Floor Plan
3/8"=1'-0"

List of Parts			
Item No	Size	Qty	Description
1	8"	1	Compound meter with test outlet
2	8"	1	Strainer
3	8"	1	Restrained dismantling assembly (MegaFlange)
4	8"	2	Gate valve, FLG x FLG OL
5	8"	1	Nipple, DI FLG X PE 8"-9" long (field fit)
6	8"	2	Nipple, DI FLG x PE 48" long (field fit)
7	8"	6	Gland, wedge action retainer (Megalug)
8	8"x8"x6"	1	Tee, DI MJ x MJ
9	8"x8"x6"	1	Tee, DI FLG x FLG
10	8"	2	Solid sleeve, DI MJ
11	8"	1	Nipple, DI PE x PE 36" long (field fit)
12	6"	1	Gate valve, FLG x FLG OL
13	6"	1	Restrained dismantling assembly (MegaFlange)
14	6"	1	Bend, DI MJ long radius 90 degrees
15	6"	1	Bend, DI FLG long radius 90 degrees
16	6"	1	Spool, DI FLG 6" long
17	6"	1	Nipple, DI PE x PE 8"-9" long (field fit)
18	6"	2	Nipple, DI FLG x PE 48" long (field fit)
19	6"	3	Gland, wedge action retainer (Megalug)
20	6"x6"x2"	2	Drip tee, FLG x FLG x FIPT
21	2"	2	Gate Valve, brass with plug
22	6"	1	Seal mechanical penetration (Linkseal LS-410-C-10)
23	8"	2	Seal mechanical penetration (Linkseal LS-400-C-9)
24	6"	2	Adjustable pipe support, Hot-dipped galvanized
25	8"	2	Adjustable pipe support, Hot-dipped galvanized
26	2"	4	Pipe, galvanized steel (field fit)
27	4"	1	Drain check valve
28		1	Ladder, galv steel with aluminum extension (field fit) (Oldcastle Precast)
29	4'-0"x4'-0"	1	Hatch, aluminum double leaf H-20 rated with hold open arm

Notes:

1. See General Vault Detail (P-855) for construction and material notes.

The selection and use of this Standard Drawing, while designed in accordance with generally accepted engineering principles and practices, is the sole responsibility of the user.



PORTLAND WATER BUREAU
CITY OF PORTLAND, OREGON

[Signature]
Chief Engineer

Standard Drawing Title

**8" Compound meter with
6" Bypass in 8-10-7 Vault
(In Sidewalk)**

Note:
All material and workmanship shall be in accordance with City of Portland Standard Construction Specifications.

Effective Date	Aug 17 2015
Calc. Book No.	PWB 1
Baseline Report Date	Aug 17 2015

Standard Drawing No.
P-872

Plot Date: 8/4/2015 9:12:22 AM File Name: J:\Engineering\CAD\Standard\WorKing_Vaults\872_81mm_61mm_8107_swk.dgn