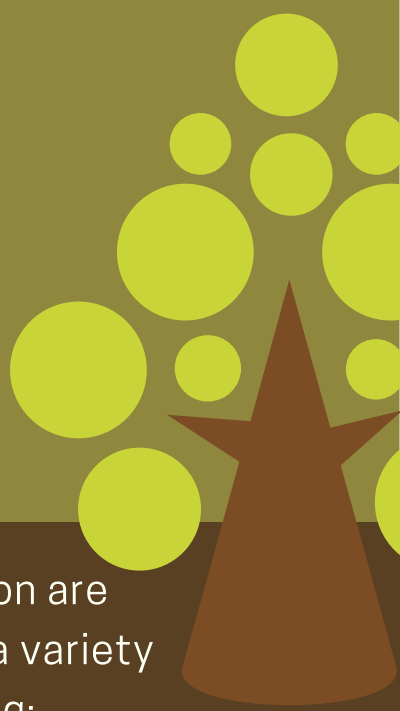


TREE & VEGETATION

MITIGATION & REMOVAL WASHINGTON PARK RESERVOIR IMPROVEMENTS PROJECT



Tree and vegetation mitigation and removal is scheduled to occur **Sept. to early-October 2016.**

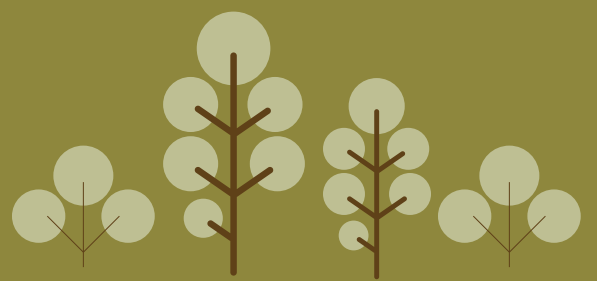
Trees and vegetation are being removed for a variety of reasons, including:

- o Room to move equipment in/out
- o Trees' proximity to the construction zone
- o The building of the new underground reservoir and shoring walls
- o Removal of ailing trees
- o Removal of trees that would be severely damaged during construction
- o Removal of non-native/invasive species trees

Approximately 209 trees will be removed from in and around the site.

None of the trees are old-growth.

40 trees or 19% to be removed are non-native/invasive species trees.



THE TREE PROTECTION PLAN IS POSTED ONLINE:
WWW.PORTLANDOREGON.GOV/WATER/WPRESERVOIRS/TREES

80 or 47% of the healthy, non-invasive trees will be used in river restoration projects in the Sandy River Basin.



Certain trees will be mitigated and fenced for protection.



These river restoration projects will help create pool habitat, increase cover, and improve spawning beds for migrating, spawning, and rearing fish populations.



AFTER CONSTRUCTION IS COMPLETED, THE WATER BUREAU HAS COMMITTED TO PLANT 20 PERCENT MORE TREES AND SHRUBS THAN REQUIRED.

WASHINGTON PARK RESERVOIR IMPROVEMENT PROJECT

A new 12.4 million gallon, seismically reinforced below ground reservoir will be constructed in the same footprint of existing Reservoir 3 (upper) with a reflecting pool/water feature on top. Existing Reservoir 4 (lower) will be disconnected from the public drinking water system and a lowland wildlife habitat area, bioswale, and reflecting pool will be constructed in the basin.

Info: www.portlandoregon.gov/water/wpreservoir